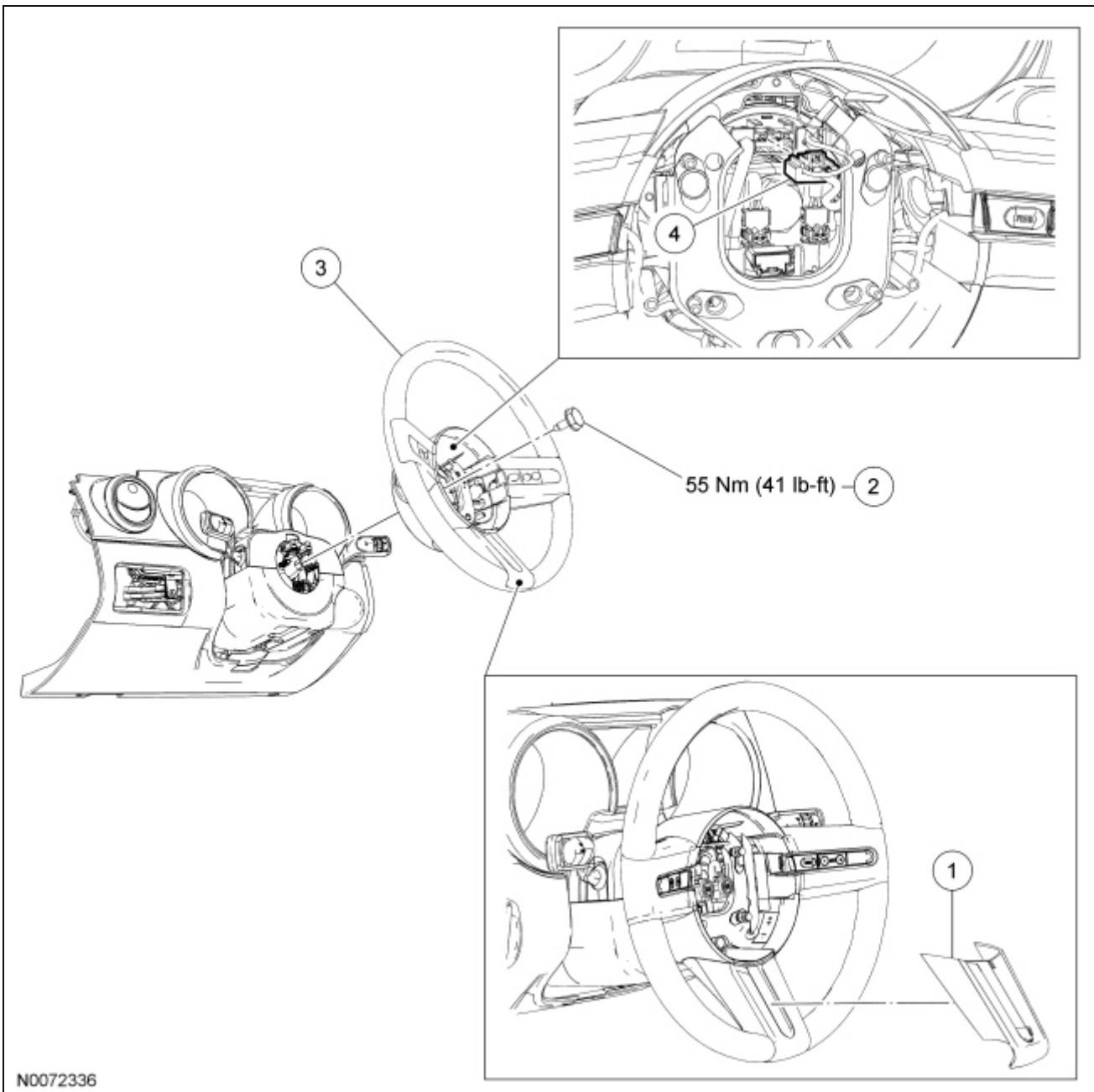


Steering Wheel



N0072336

Item	Part Number	Description
1	3F830	Steering wheel spoke finish panel (3 required)
2	043B13	Steering wheel bolt
3	3600	Steering wheel
4	—	Steering wheel switches/horn electrical connector (part of 3600)

Removal and Installation

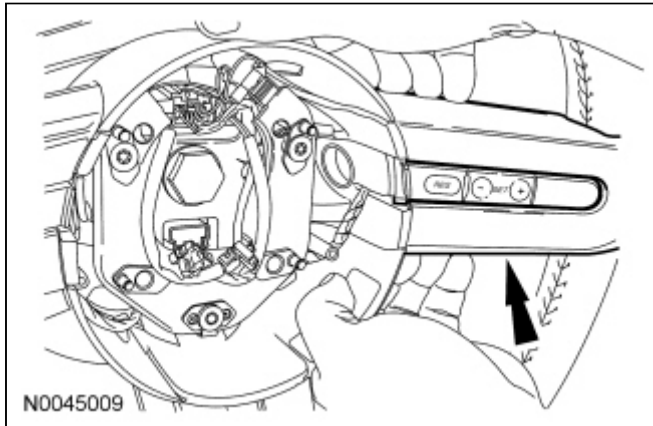
1. Place the steering wheel in the straight-ahead position and turn the ignition switch to the OFF position.
2. Remove the driver air bag module. For additional information, refer to [Section 501-20B](#).

3. **NOTICE:** Do not use a screwdriver or prying device to remove the steering wheel spoke finish panel(s) or damage to the steering wheel may occur. Place fingers near the base of the wheel spoke and gently pull upward to remove the finish panel(s).

NOTE: The steering wheel spoke finish panel(s) can be serviced separately. A new steering wheel does not need to be installed.

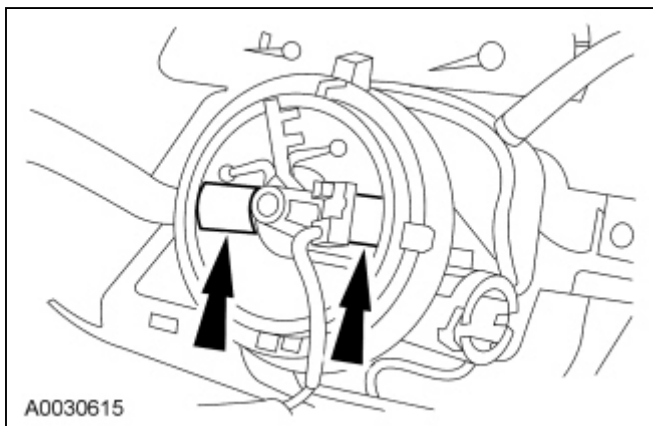
NOTE: It is not necessary to remove the steering wheel when installing new steering wheel spoke finish panel(s).

If necessary, remove the steering wheel spoke finish panel(s).



4. Remove and discard the steering wheel bolt.
 - To install, tighten the new bolt to 55 Nm (41 lb-ft).
5. Disconnect the steering wheel switches/horn electrical connector from the clockspring.
6. Remove the steering wheel.
 - Route the connectors for the clockspring through the steering wheel.
7. **NOTICE:** Do not allow the clockspring to turn from its removal position or damage to the clockspring may occur.

Tape the clockspring center rotor to the outer housing to keep it from rotating.



8. To install, reverse the removal procedure.
-

